

YSI *incorporated*



# YSI 58 Dissolved Oxygen Meter

## Operations Manual



# CONTENTS

---

<b>SECTION 1</b>	<b>INTRODUCTION .....</b>	<b>1</b>
<b>SECTION 2</b>	<b>PREPARING THE METER .....</b>	<b>2</b>
2.1	UNPACKING.....	2
2.2	WARRANTY CARD.....	2
2.3	BATTERIES.....	2
<b>SECTION 3</b>	<b>PREPARING THE PROBE.....</b>	<b>3</b>
3.1	CHOOSING THE CORRECT PROBE.....	3
3.1.1	YSI 5239 DO FIELD PROBE .....	3
3.1.2	YSI 5905 BOD PROBE.....	3
3.1.3	YSI 5739 DO PROBE.....	4
3.1.4	YSI 5718 DO FIELD PROBE .....	4
3.1.5	YSI 5750 BOD BOTTLE PROBE .....	4
3.2	PROBE INSTALLATION - YSI 5739.....	5
3.3	CHOOSING THE CORRECT MEMBRANE .....	5
3.3.1	MEMBRANE INSTALLATION FOR THE 5239 PROBE .....	6
3.3.2	MEMBRANE INSTALLATION FOR THE 5905 PROBE .....	7
3.3.3	MEMBRANE INSTALLATION FOR THE 5700-SERIES PROBES .....	8
<b>SECTION 4</b>	<b>OPERATION .....</b>	<b>10</b>
4.1	PRINCIPLES OF OPERATION .....	10
4.2	TURNING THE INSTRUMENT ON .....	11
4.3	CALIBRATION .....	11
4.3.1	AIR CALIBRATION.....	12
4.3.2	WINKLER TITRATION.....	13
4.3.3	AIR-SATURATED WATER CALIBRATION.....	13
4.3.4	CALIBRATION FREQUENCY.....	14
4.4	MAKING MEASUREMENTS.....	14
4.4.1	ENVIRONMENTAL CONSIDERATIONS.....	14
4.4.2	MEASURING OXYGEN IN FLUIDS OTHER THAN WATER .....	15
4.4.3	CALIBRATING TO DISPLAY OXYGEN PARTIAL PRESSURE IN MM HG .....	15
4.5	RECORDER OUTPUT.....	16
<b>SECTION 5</b>	<b>CARE AND MAINTENANCE .....</b>	<b>17</b>
5.1	THE METER CASE .....	17
5.2	PROBE PERFORMANCE CHECK.....	17
5.3	PROBE PRECAUTIONS .....	17
5.3.1	5905 AND 5239 PROBE CARE .....	18
5.3.2	5700-SERIES PROBE CARE .....	19
5.4	PROBE STORAGE.....	19
5.4.1	5905 AND 5239 PROBE STORAGE .....	19
5.4.2	5700 SERIES PROBE STORAGE.....	19
<b>SECTION 6</b>	<b>DISCUSSION OF MEASUREMENT ERRORS.....</b>	<b>20</b>
<b>SECTION 7</b>	<b>TROUBLESHOOTING.....</b>	<b>21</b>
<b>SECTION 8</b>	<b>WARRANTY AND SERVICE INFORMATION .....</b>	<b>23</b>
<b>APPENDIX A</b>	<b>GENERAL SPECIFICATIONS.....</b>	<b>28</b>

<b>APPENDIX B</b>	<b>REQUIRED NOTICE .....</b>	<b>30</b>
<b>APPENDIX C</b>	<b>ACCESSORIES AND REPLACEMENT PARTS.....</b>	<b>31</b>
<b>APPENDIX D</b>	<b>UNIT CONVERSION CHART.....</b>	<b>32</b>
<b>APPENDIX E</b>	<b>OXYGEN SOLUBILITY TABLE .....</b>	<b>33</b>
<b>APPENDIX F</b>	<b>CALIBRATION VALUES TABLE.....</b>	<b>35</b>

## SECTION 1 INTRODUCTION

---

The YSI 58 Dissolved Oxygen Meter is intended for field or laboratory use for dissolved oxygen and temperature measurement and water, but is also suitable for use in certain other fluids. See Section 4.4.2, Measuring Oxygen in Fluids Other than Water. The meter may be used with the YSI 5239 probe, 5905 probe or the 5700 Series probes.

Dissolved oxygen is displayed in mg/L (1 mg/L = 1 part per million) or in percent air saturation. The air saturation feature is discussed in detail in the next section. Display sensitivity in the mg/L mode may be selected to read in tenths to in hundredths of a mg/L.

Temperature is displayed in °C from -5 °C to +45 °C with 0.1°C resolution. The mg/L mode is automatically temperature compensated for changes in solubility of oxygen in water and for permeability of the probe membrane. A salinity compensation control allows direct determination for mg/L of dissolved oxygen in oceanic or estuarine waters.

The probes use Clark-type membrane covered polarographic sensors with built-in thermistors for temperature measurement and compensation. A thin, permeable membrane stretched over the sensor isolates the sensor elements from the environment, but allows oxygen and certain other gases to enter. When a polarizing voltage is applied across the sensor, oxygen that has passed through the membrane reacts at the cathode, causing a current to flow.

The membrane passes oxygen at a rate proportional to the pressure difference across it. Since oxygen is rapidly consumed at the cathode, it can be assumed that the oxygen pressure inside the membrane is effectively zero. Hence, the force causing the oxygen to diffuse through the membrane is proportional to the absolute pressure of oxygen outside the membrane. If the oxygen pressure increases, more oxygen diffuses through the membrane and more current flows through the sensor. A lower pressure results in less current.

### PERCENT SATURATION

---

The percent saturation feature of this instrument allows quick determination of the degree of air saturation occurring in fresh or saline water. This feature also allows measurement in fluids of unknown oxygen solubility.

The percent saturation displayed in this mode is the saturation that would occur if the sample were saturated with air under a normal barometric pressure of 1013 millibars (760 mm Hg or 29.92 inches Hg). Results reported from such measurements should be noted as air saturation, corrected to standard pressure.

This feature also makes possible a simple and quick calibration procedure that eliminates the need to determine exact probe temperature or to calculate the barometric pressure effect on the calibration value.

## SECTION 2 PREPARING THE METER

---

### 2.1 UNPACKING

---

When you unpack your new YSI 58 Dissolved Oxygen and Temperature System for the first time, compare the packing list with the contents of the shipping box. If there is anything missing or damaged, contact your YSI dealer from whom you purchased the YSI 58 or YSI Customer Service at 800-765-4974 or 937-767-7241.

### 2.2 WARRANTY CARD

---

Please complete the Warranty Card and return it to YSI. The warranty card allows the entry of your purchase of this instrument in our computer system.

### 2.3 BATTERIES

---

Batteries provide complete portability; a battery eliminator feature bypasses the instrument batteries for extended line-powered use (not including stirrer). Instrument batteries are carried internally in one holder while a second holder allows internal installation of batteries for powering a submersible stirrer for use in the field.

Instrument batteries are in the upper holder. Four D-size carbon-zinc batteries are used. The **LOBAT** warning shows on the display when about 50 hours of use remain. This warning reminds the operator to change batteries at their earliest convenience. Batteries may be removed when the instrument will be used on a long-term basis for laboratory measurement powered by the YSI 5401 or 5402 battery eliminator.

Stirrer batteries fit in the lower battery holder. Four D-size carbon-zinc batteries are used. When about five hours or less of battery life remains, the **LOBAT** warning will show on the display when the **STIRRER** control is held at the spring-loaded **BATT CHK** position. Instrument must be turned on. Batteries are needed only when the YSI 5795A Submersible Stirrer will be used.

#### **YSI 5401 (115 VAC) AND 5402 (230 VAC) BATTERY ELIMINATORS**

---

For exclusive or long-term laboratory use, the 5401 or 5402 Battery Eliminator may power the YSI 58. When the battery eliminator is in use, batteries may be removed from the instrument battery compartment (upper compartment).

**Note: The battery eliminator does not power the 5795A Field Stirrer, which operates only when there are batteries in the stirrer battery compartment (lower compartment).**

## SECTION 3 PREPARING THE PROBE

---

### 3.1 CHOOSING THE CORRECT PROBE

---

Five different YSI oxygen probes may be used with the YSI 58 Meter.

- **YSI 5239** is designed for field use with cable lengths of 10, 25 or 50 foot.
- **YSI 5905** is a self-stirring BOD bottle probe.
- **YSI 5739** is designed for field use and may be used with or without a stirrer. A 5740 probe cable or 5795A stirring cable is required for use with the 5739 probe. YSI 5795A has a dual-purpose cable to which both stirrer and probe are connected.
- **YSI 5750** is a BOD bottle probe with no stirrer.
- **YSI 5718** is designed for field use with no pressure compensation and has a permanently attached cable.

#### 3.1.1 YSI 5239 DO FIELD PROBE

---

The YSI 5239 probe is used for measuring dissolved oxygen in the field. It features cap membranes for easy membrane replacement (YSI 5906 membrane caps). The probe is rugged, with the DO and temperature sensors enclosed in a heavy-duty probe guard. A 10, 25 or 50 foot cable is directly connected to the probe body making it waterproof. A 5-pin MS connector at the end of the cable makes the 5239 fully compatible with all YSI 50 series DO meters retaining the accuracy of the system. The 5239 has been optimized for YSI meters which have a microprocessor for sampling and processing data, such as YSIs 50B and 52.

**NOTE:** The 5239 probe is shipped dry. A shipping membrane was installed to protect the electrodes. **A new membrane cap must be installed before first use.**

#### 3.1.2 YSI 5905 BOD PROBE

---

The YSI 5905 BOD (Biochemical Oxygen Demand) probe is used for measuring dissolved oxygen in all popular size BOD bottles. This probe features a self-stirring probe and an easily replaced membrane cap and a refurbishable electrode system.

***IMPORTANT: Intended Use***

The 5905 probe is intended for laboratory use, not field use. It is not waterproof and should never be immersed past the taper on the stem of the probe.

The 5905 probe is designed for use with all YSI dissolved oxygen meters, except for the YSI 55, 85 or YSI 95. The 5905 probe comes in several versions, designed to fit different bottle sizes.

5905	5° taper per side to fit U.S. Standard BOD bottles.
5905 - J	Includes an adapter to fit 5° taper per side smaller bottles with built - in overflow funnels.
5905 - K	Includes a S 19 funnel.
5905 - L	Includes a S 24 funnel.
5905 - W	6" long probe for use with wine bottles.

### 3.1.3 YSI 5739 DO PROBE

---

For user convenience, the 5739 probe is equipped with a disconnecting cable to facilitate changing cable lengths and replacing damaged cables or probes. The probe and cable assembly is held together with a threaded retaining nut. The connection is not designed for casual disconnection and should only be disconnected when necessary. For sample stirring with the 5739 probe, the 5795A Submersible Stirrer has a dual-purpose cable to which both stirrer and probe are connected.

### YSI 5795A SUBMERSIBLE STIRRER

---

The YSI 5795A Stirrer, which can only be used with the 5739 probe, features a single cable for both probe and stirrer to permit convenient manipulation and storage.

When a stirrer and probe are assembled, the stirrer agitates the sample directly in front of the sensor by means of a rotating eccentric weight that causes the spring-mounted, sealed motor housing to vibrate. An impeller on the end of the motor housing flushes the fluid being assayed across the sensor surface.

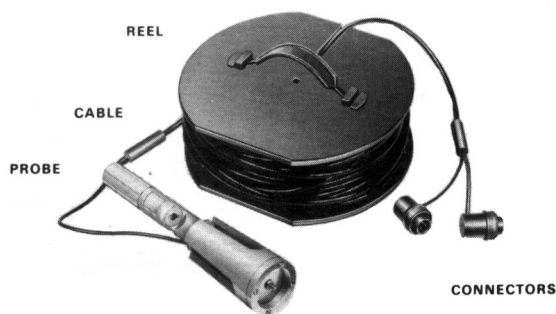


Figure 1

### 3.1.4 YSI 5718 DO FIELD PROBE

---

The YSI 5718 field probe has a permanently attached cable and no pressure compensation.

### 3.1.5 YSI 5750 BOD BOTTLE PROBE

---

The YSI 5750 probe is similar in design to the 5739, but has a tapered body designed to fit standard US BOD bottles. It does not have a stirrer or cap membranes. Agitation of the sample must be provided by other means, such as a magnetic stirrer.

Four D-size carbon-zinc batteries that are housed in the lower battery compartment of the YSI 58 power the stirrer. When the stirrer will not be used for an extended period, these batteries should be removed from the instrument.

## **3.2 PROBE INSTALLATION - YSI 5739**

---

To disconnect the cable, unscrew the retaining nut and slide it down the cable to expose the connector. Pull gently on the cable and connector until the connector comes away from the probe body.

To reassemble, inspect the connector and O-Ring for cleanliness. If the O-ring is frayed or damaged, remove it by squeezing it in the groove causing it to bulge, then roll it out of the groove and off of the connector. A replacement O-ring is supplied with the cable.

Push the connector into the probe body, rotating it until the two halves match up. A *VERY LIGHT* coating of silicone grease on the O-Ring will make reassembly easier.

**CAUTION:** DO NOT apply more than a light coating of grease, as it will attract dirt and particles that may compromise the seal of the O-ring.

Air trapped between the connector halves that may cause them to spring apart slightly is normal. Screw on the retaining nut, *HAND TIGHTEN ONLY!*

Note: If erratic readings are experienced, disconnect the cable and inspect for the presence of water. If water is present, dry out and reconnect, replacing the O-Ring.

### **Pressure Compensation**

The vent on the side of the probe is part of a unique pressure compensating system that helps assure accurate readings at great depths of water. Pressure compensation is effective to 0.5% of reading with pressures to 100psi (230 feet water). The quantity of air bubbles trapped under the membrane determines how serious the pressure error will be, which is why proper preparation of the probe is essential. See Section 4, Operation. The system is designed to accommodate a small amount of trapped air and still function properly, but the amount should be kept to a minimum.

The compensating system normally does not require servicing and should not be taken apart. However, if electrolyte is leaking through the diaphragm or if there is an obvious puncture, the diaphragm must be replaced. A spare is supplied with the probe. Using a coin, unscrew the retaining plug and remove the washer and diaphragm, flush any salt crystals from the reservoir, install the new diaphragm (ridged side in), replace the washer and screw in the retaining plug.

## **3.3 CHOOSING THE CORRECT MEMBRANE**

---

An extremely thin membrane increases O<sub>2</sub> permeability and probe signal current, and hastens a probe's response; but it achieves this at the cost of ruggedness. The membrane normally used with the YSI 58's probes is the 1 ml (.001") membrane. This 1 ml membrane represents a compromise between quickness of response, and membrane strength and integrity.

For special circumstances, a 0.5 ml (.0005") membrane is available. This half-thickness membrane hastens response at low temperatures and helps suppress background current at very low dissolved oxygen levels. When data is routinely collected with sample temperatures below 15°C and at DO levels below 20% air saturation, the low signal current resulting from the use of the standard membranes tends to magnify the probe's inherent constant background signal. Using the high sensitivity membranes in this situation will decrease the percent error due to the probe's background current.

For long-term monitoring situations only, a half-sensitivity, double-thickness 2 ml (.002") membrane is available. Order the YSI Item # 5685 2 ml membrane, which includes membranes and electrolyte for the 5718 and 5739 probes.

A selector switch inside the YSI 58 modifies the circuit for the membrane in use. This switch must be set to the position corresponding to the membrane in use. Facing the back of the instrument, with the back cover removed, the switch will be found on the top, right corner of the main PC board. Its positions are labeled **.5, 1 and 2 MIL**. Also, See Section 4.4.2, Oxygen Measurements in Fluids Other Than Water, for use of this switch in special measurement circumstances.

Membrane life depends on usage. However, if the electrolyte is allowed to evaporate and an excessive amount of bubbles form under the membrane, or the membrane becomes damaged, thoroughly flush the reservoir with electrolyte and install a new membrane.

If erratic readings are observed or calibration is stable, you need to replace the membrane.

The gold cathode should always be bright and untarnished. If it is tarnished, which can result from contact with certain gases, or plated with silver, which can result from extended use with a loose or wrinkled membrane, return it to YSI for service. You can also clean the gold cathode with the YSI 5680 Probe Reconditioning Kit. Never use chemicals or any abrasive other than what is supplied with the kit. See Section 8 for contact information.

### **3.3.1 MEMBRANE INSTALLATION FOR THE 5239 PROBE**

---

NOTE: The 5239 probe is shipped dry. A shipping membrane was installed to protect the electrodes. <b>A new membrane cap must be installed before first use.</b>
---

Follow the steps below to install a membrane cap:

1. Unscrew and remove the probe guard. See figure 2.
2. Unscrew the old membrane cap and remove it from the probe.
3. Thoroughly rinse the entire area of the silver anode, gold cathode and threads with clean water (distilled or deionized) to remove any dry crystals of the old electrolyte.
4. Hold the membrane cap and fill it with 6 to 7 drops of YSI standard electrolyte (KCl probe solution) provided.
5. Tap the bottom of the membrane cap with your finger a few times (don't touch the membrane) to shake loose any trapped air bubbles.
6. Screw the membrane cap onto the probe moderately tight. A small amount of electrolyte should overflow.
7. Rinse off the excess electrolyte with clean water.
8. Screw the probe guard onto the probe body.
9. Place the probe in the calibration bottle provided. Verify that sponge in the bottle is wet.

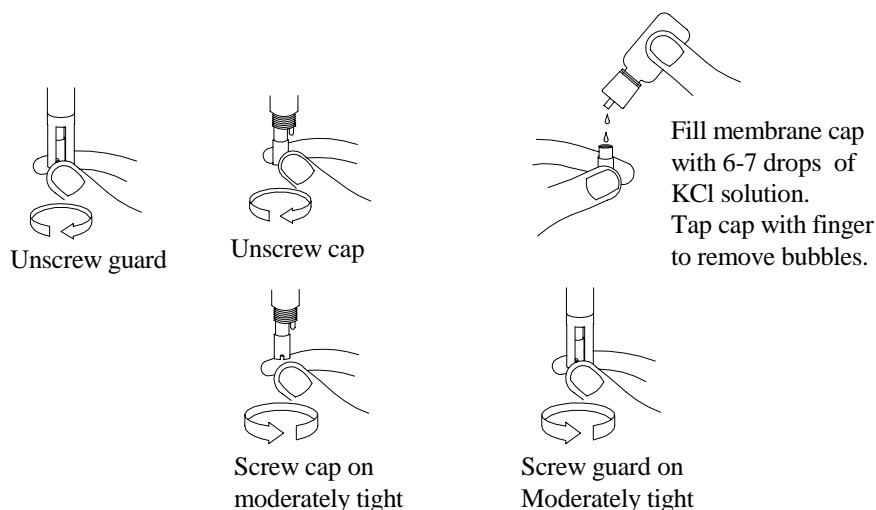


Figure 2

### 3.3.2 MEMBRANE INSTALLATION FOR THE 5905 PROBE

#### **New Probe Use**

**New probes are shipped with a dry membrane cap to protect the electrodes. A new membrane cap must be installed before first use.**

Follow these instructions to change membrane caps:

1. Remove the stir paddle from the probe by pulling it straight out. See figure 3.
2. Unscrew the old membrane cap from the probe. Before installing a new membrane, clean the probe tip with deionized water in order to remove any contaminants.
3. Hold the membrane cap and fill it at least half full with the electrolyte solution provided. Screw the membrane cap onto the probe moderately tight. A small amount of electrolyte should overflow.
4. Rinse off excess electrolyte from the probe with deionized water.
5. Reinstall the stir paddle.

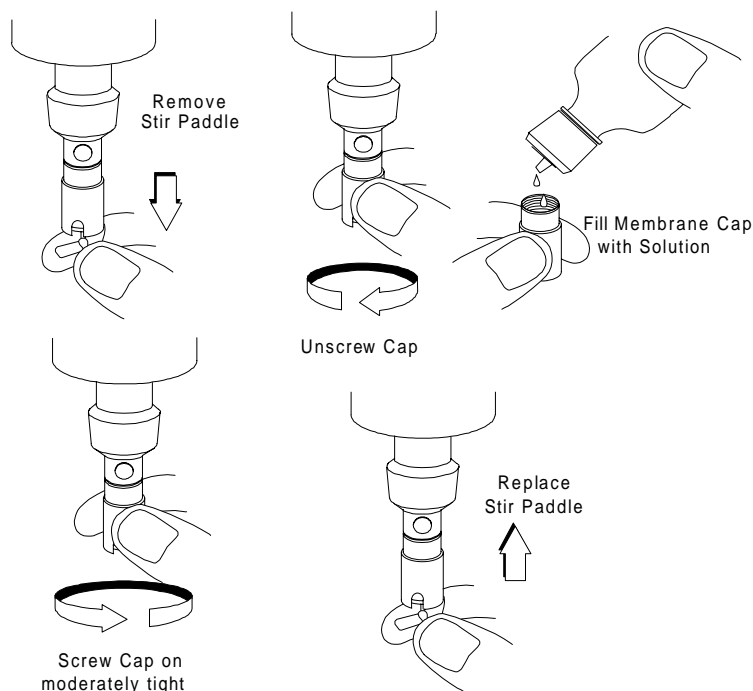


Figure 3

## CHECKING THE PROBE ZERO

The probe zero is checked by immersing the probe in a sodium sulfite solution (0.08M or 3g  $\text{Na}_2\text{SO}_3/300\text{mL}$ ), or in water which has an inert gas bubbling through it (e.g. nitrogen, argon). The meter should read less than 1% dissolved oxygen in either of these environments. If it does not, change the membrane or clean the probe.

### 3.3.3 MEMBRANE INSTALLATION FOR THE 5700-SERIES PROBES

#### MEMBRANE INSTALLATION

All YSI 5700 Series Probes have similar sensors and should be cared for in the same way. They are precision devices and require careful treatment if measurements of high accuracy are to be made. Prepare the probe as described below.

**WARNING:** All probes are shipped dry, you must follow these instructions!

1. Open the membrane kit and prepare the electrolyte solution. Dissolve the KCl in the dropper bottle by filling it to the neck with deionized or distilled water and shaking until the solids are fully dissolved. After the KCl is dissolved, wait a few minutes until the solution is free of bubbles.
2. Remove the o-ring and the dry membrane from (after unscrewing the sensor guard). Thoroughly rinse the sensor with electrolyte fluid.

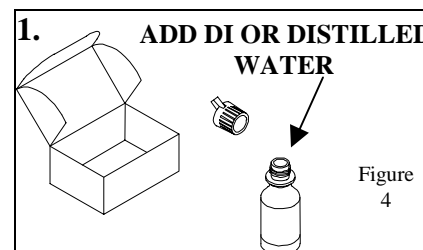
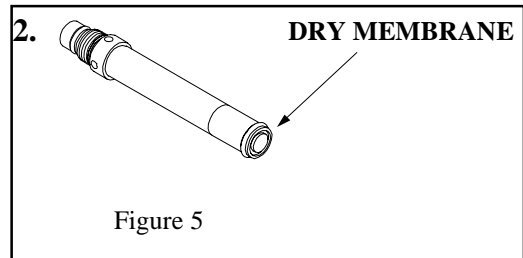
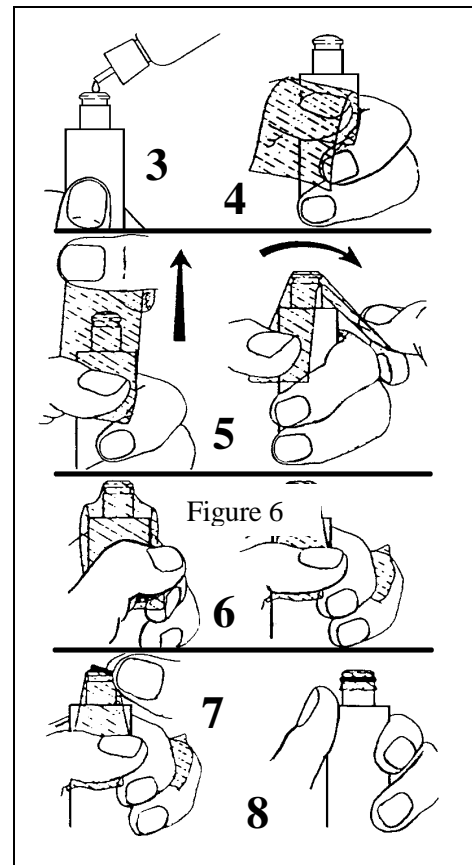


Figure 4

- Grasp the probe in your left hand (or right for left-handers). When preparing the YSI 5739 probe, the pressure compensating vent should be to the right. (A left-handed operator may choose to reverse hands and vent direction.) Successively fill the sensor body with electrolyte, then pump the diaphragm with the eraser end of a pencil or with some similar soft, blunt tool. Continue filling and pumping until no more air bubbles appear. (With practice, you can hold the probe and pump the diaphragm with one hand while simultaneously pouring electrolyte into the sensor body with the other.)



- Secure a membrane between your left thumb and the probe body. Always handle the membrane with care, touching it only at the ends.
- With the thumb and forefinger of your right hand, grasp the free end of the membrane. With one continuous motion, gently stretch it up, over, and down the other side of the sensor. The membrane should conform to the face of the sensor.
- Secure the end of the membrane under the forefinger of your left hand.
- Roll the O-ring over the end of the probe, being careful not to touch the membrane surface with your fingers. There should be no wrinkles or trapped air bubbles. Small wrinkles may be removed by lightly tugging on the edges of the membrane. If bubbles are present, remove the membrane and repeat steps 3-8.



- Trim off any excess membrane with a sharp knife or scissors. Rinse off any excess KCl solution, but be careful not to get any water in the connector.
- Shake off excess electrolyte and reinstall the sensor guard.
- A plastic bottle without a bottom is provided with the YSI Field probes for convenient calibration and probe storage. Place a small piece of moist towel or sponge in the bottle and insert the probe into the open end. This ensures 100% humidity for accurate calibration and helps protect the probe against drying out in storage. The YSI 5905 and 5750 probes can be stored in a BOD bottle containing about 1" of water.

## SECTION 4 OPERATION

---

### 4.1 PRINCIPLES OF OPERATION

---

The probes for use with the YSI 58 are a Clark type voltammetric (polarographic) sensor of dissolved oxygen. An oxygen permeable membrane covers an electrolytic cell consisting of a cathode and an anode. This membrane acts as a diffusion barrier and an isolation barrier preventing the fouling of the cathode surface by impurities in the environment. The cathode is the gold electrode, and the anode is the silver electrode that completes the electrolytic cell and acts as a reference electrode.

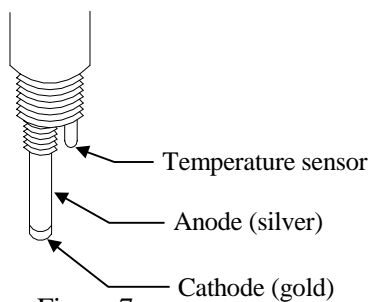
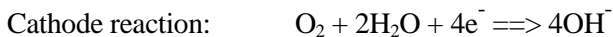


Figure 7

Upon entering the cell through the membrane, oxygen is reduced at an applied potential of -0.8 V referenced to the silver electrode. The reduction current at the cathode is directly proportional to the partial pressure of oxygen in liquid (expressed as %-air saturation) that is also proportional to the concentration of dissolved oxygen (in mg/L) at a particular temperature. Thus the same partial pressure of oxygen (%-air saturation) in liquid gives different concentrations of dissolved oxygen (mg/L) at different temperatures because of the different solubility of oxygen at different temperatures.



### THE DO READINGS FROM THE CATHODE REDUCTION

---

The oxygen reduction current is sampled and processed, by the meter, and displayed as either %-air saturation or mg/L. While the parameter of %-air (partial pressure) is independent of temperature and salinity, mg/L (solubility of oxygen) is a function of temperature and salinity. For instance, the same %-air reading (same partial pressure) would give a higher mg/L reading at a lower temperature than at a higher temperature. Also, the higher the salinity, the lower the solubility for the same %-air reading at the same temperature.

### THE FORMATION OF AgCl AT THE ANODE

---

While the oxygen reduction current passes through the internal circuit to be reported as the DO reading, it also passes through the anode oxidizing the silver and forming a thin layer of silver chloride. This oxidation of silver at the chloride medium provides a stable potential that the cathode

potential is referenced to (for instance, the polarization potential of the cathode is -0.8 V versus the potential of the Ag/AgCl redox couple at the silver anode). As more and more silver chloride (an insoluble solid and poor conductor of electricity) accumulates at the anode, it begins to block the passage of current in the electrolytic cell. The silver anode must be cleaned periodically to prevent this thick layer of silver chloride from reducing the sensitivity of the sensor.

## THE FUNCTION OF THE ELECTROLYTE

---

There are two main functions for the electrolyte:

1. Supply the chloride ( $\text{Cl}^-$ ) to the anode/reference electrode for the counter reaction of the oxygen reduction at the cathode.
2. Provide the ionic conduction of electricity inside the cell, especially in the thin layer between the gold cathode and the membrane.

Under normal operating conditions, such as measuring oxygen around 100 %-air (8.27 mg/L) at 25° C, the strength of the chloride concentration should last up to 500 hours before the chloride becomes a limiting factor in the operation of the oxygen sensor. 500 hours translates into about 62.5 working days at 8 hours per day operation.

## 4.2 TURNING THE INSTRUMENT ON

---

The YSI 58 may be used in a vertical, horizontal or tilted position. It may be carried or moved during use without affecting its accuracy or stability of measurement.

1. Connect the prepared probe to the PROBE receptacle and screw the retaining ring finger tight.
2. Zero the instrument. Set the function switch to **ZERO** and adjust the display to read **00.0** with the **O2 ZERO** control.
3. If using a stirrer, connect it now. Check the stirrer battery condition by turning the **STIRRER** switch to its spring-loaded **BATT CHK** position. The warning **LOBAT** will show on the display when approximately 5 hours of battery life remain.
4. Wait at least 15 minutes for the probe to stabilize. A wait is necessary whenever the meter has been OFF or the probe has been disconnected.

## 4.3 CALIBRATION

---

To calibrate the YSI 58, the function switch is set to the percent saturation mode with the probe in moist air; then the **O2 CALIB** control is adjusted to obtain a meter reading corresponding to the calibration value for the local altitude. Charts for quickly determining the calibration values can be found in Appendix F, Calibration Values Table.

This simple procedure accurately calibrates the meter for readings in both the mg/L and the percent saturation modes. The instrument may be switched from one mode to the other without losing its calibration. Other methods are also possible and are discussed in greater detail in Section 4.3, Calibration.

Calibration consists of exposing the probe to a known oxygen concentration such as air at 100% relative humidity or water of a known oxygen content, and then adjusting the **02 CALIB** control so the display shows a reading that matches the O<sub>2</sub> concentration of the known sample.

In the discussion of calibration below instructions for Air Calibration are given for calibrating in the % air saturation mode, while instructions for Air Saturated Water Calibration are given for calibrating in the mg/L mode. Take note that either calibration technique can be performed in either mode. Use of the percent air saturation mode is normally easier since the instrument automatically compensates for temperature variation in that mode. The operator may nevertheless elect to calibrate in the mg/L mode if he intends to make measurements in that mode, since doing so will eliminate any possible mode-to-mode error. See final **NOTE** under both Air Calibration and Air Saturated Water Calibration.

### 4.3.1 AIR CALIBRATION

---

Air Calibration is the quickest and by far the simplest calibration technique. Experience has shown that it is reliable and is recommended for the YSI 58. Air Calibrate the YSI 58, with any field probe as follows:

1. Set the function switch to **% Mode**.
2. To calibrate the probe, place a moist sponge or a piece of cloth in the plastic calibration bottle. Loosen the bottle lid about ½ turn and slip the bottle over the probe guard up to the body. Place the probe in a protected location where temperature is not changing, or wrap it in a cloth or other insulator.
3. The BOD probes can be placed in a BOD bottle containing about one inch of water to provide a 100% relative humidity calibration environment.
4. Remember that the highest accuracy of measurement is achieved when the probe is zeroed and calibrated at a temperature as close as possible to the temperature of the sample to be measured.
5. Set the function switch to **ZERO** and readjust the display to read **0.00**. Switch back to percent air saturation mode.
6. Determine the local altitude or the “true” atmospheric pressure. Using the pressure/altitude chart, determine the correct **CALIB VALUE** for your pressure or altitude

Note: True atmospheric pressure is as read on a mercury barometer. Weather Bureau reporting of atmospheric pressure is corrected to sea level.

7. When the display reading has stabilized, unlock the **02 CALIB** control locking ring and adjust the display to the **CALIB VALUE** indicated in the pressure/altitude chart in Appendix F. Relock the locking ring to prevent inadvertent changes.

**NOTE:** The oxygen content of air is affected by water vapor content. The use of air at 100% relative humidity assures proper calibration. Moreover, air at less than 100% relative humidity can

cause evaporation of moisture from the probe's temperature sensor, producing a local cooling effect. Errors of up to 8% can result from calibrating in dry air.

NOTE: Should the user elect to air calibrate in the mg/L mode, Air Saturated Water Calibration steps 2-5 should be followed.

### 4.3.2 WINKLER TITRATION

---

An alternative to air calibration is to calibrate the probe to a method such as Winkler Titration as follows:

1. Draw a volume of nearly air saturated water from a single source and divide it into four samples. Determine the oxygen in three samples using the Winkler Titration technique, and average the three values. If one of the values differs from the other two by more than 0.5 mg/L, discard that value and average the remaining two.
2. Place the probe in the fourth sample and stir.
3. Set the **SALINITY** control to **0 (FRESH)** or to the appropriate value of the sample.
4. Readjust zero if necessary.
5. Switch to the 0.1 mg/L mode and while continuing to stir the sample, allow the probe to remain in the sample for at least two minutes; then set the **02 CALIB** control to the average value determined above. Leave the probe in the sample for an additional two minutes to verify stability. Readjust if necessary.

### 4.3.3 AIR-SATURATED WATER CALIBRATION

---

A third technique for calibration is by means of air-saturated water. This has proven an uncertain method, as it is difficult to secure precise and stable saturation. Proceed as follows:

1. Air saturate a volume of water by aerating for at least 15 minutes at a constant temperature.
2. Place the probe in the sample and stir. Switch the function switch to **TEMP** from the solubility of oxygen chart in Appendix E, note the temperature of the sample, and record the mg/L value corresponding to the temperature indicated.
3. Determine the local altitude or the "true" atmospheric pressure. Using the pressure/altitude chart, determine the correct **CALIB VALUE** for your pressure or altitude

Note: True atmospheric pressure is as read on a mercury barometer. Weather Bureau reporting of atmospheric pressure is corrected to sea level.

4. Multiply the mg/L value from the solubility of oxygen table by the **CALIB VALUE** from the pressure/altitude table and divide by 100 to determine the correct mg/L oxygen content of the saturated sample.

EXAMPLE: Temperature 21°C: oxygen value at sea level or 760 mm Hg  
Pressure = 8.92 mg/L  
Altitude 1400 feet: calibration value = 95

$$\text{Corrected calibration value} = \frac{8.92 \times 95}{100} = 8.47 \text{ mg/L}$$

5. Readjust zero if necessary.

6. Check that the **SALINITY** knob is set at zero. Adjust the **02 CALIB** control to the calibration value determined in the foregoing step. Wait two minutes to verify stability; readjust if necessary.

NOTE: If calibration is performed in the percent air saturation mode, the operator need not calculate for temperature; but will simply set the display to read **CALIB VALUE** for the pressure/altitude table according to the local altitude or the true barometric pressure at the point of measurement.

#### **4.3.4 CALIBRATION FREQUENCY**

---

Daily calibration is generally appropriate. Calibration can be disturbed by physical shock, touching the membrane, fouling of the membrane or drying out of the electrolyte. Check calibration after each series of measurements, and in time you will develop a realistic schedule for recalibration. When probes are not in use, store them according to the procedures in Section 5, Care and Maintenance.

### **4.4 MAKING MEASUREMENTS**

---

For accurate measurement, water movement of one foot per second or more is required so that the oxygen-depleted layer of the sample at the membrane surface is flushed away and replenished. A moving stream can provide this motion; alternatively, the probe can be moved through the sample by hand. The YSI 5795A Submersible Stirrer supplies the necessary stirring for the 5739 probe. The YSI 5905 BOD probe has its own line powered stirrer for laboratory use. When the 5750 BOD probe is used, stirring must be provided such as with a magnetic stirrer.

1. With the instrument prepared for use, and the probe calibrated, place the probe in the sample. If the 5795A stirrer is to be used, connect it and turn the **STIRRER** switch to **ON**. Connect the recorder, if it is used.
2. Adjust the **SALINITY** control to the salinity of the sample. (Not required when reading % air saturation).
3. Turn the function switch to **02 ZERO** and readjust if necessary.
4. Turn the function switch to the desired readout mode and read the dissolved oxygen value in mg/L or in % air saturation when the meter reading has stabilized.

#### **4.4.1 ENVIRONMENTAL CONSIDERATIONS**

---

- Erroneous readings will be made in any environment where the probe's Teflon membrane will become rapidly coated with oxygen consuming or oxygen evolving organisms. In some cases, the YSI 5795A Submersible Stirrer can provide adequate cleaning action due to its high turbulence.

- Erroneous readings will be made in any environment where heavy residue may coat the probe's membrane. In such instances, problems generally can be eliminated by more frequent probe service and/or cleaning.
- Erroneous readings will be made in any environment where dissolved gases are present that will chemically interfere with the probe's electrochemistry. Known interfering gases are hydrogen sulfide, sulfur dioxide, halogens, neon, nitrous oxide and nitric oxide.
- Also avoid any environment that contains substances that may attack the probe materials. Some of these substances are concentrated acids, caustics and strong solvents. The probe materials that come in contact with the sample include FEP Teflon, acrylic plastic, ABS plastic, EPR rubber, stainless steel, epoxy and the polyurethane cable covering.
- Long-term use, as for monitoring, in certain applications can magnify the effect of factors that impair probe accuracy.

#### **4.4.2 MEASURING OXYGEN IN FLUIDS OTHER THAN WATER**

---

The YSI 58 is normally used for measuring the oxygen content of naturally occurring waters and wastewaters. The % air saturation feature of the instrument additionally permits O<sub>2</sub> measurement in some non-water fluids including air, most gases, foods and some non-aqueous liquids.

Suitable fluids for measurement are those that do not attack the sensor materials and are of sufficiently low viscosity to permit sample stirring across the probe's membrane. Strong acids and solvents capable of swelling or dissolving the probe's ABS plastic body or EPR o-rings must be avoided. See Section 3, Preparing the Probe, for a list of interfering gases.

The percent air saturation of any fluid not excluded in the description above may be measured directly. The instrument is calibrated by the customary air calibration technique and measurement is carried out just as in natural waters.

In measuring non-aqueous liquids, the mg/L mode should not be used. Such samples may have an oxygen solubility or Bunsen coefficient significantly different from that automatically programmed in the mg/L mode for water.

#### **4.4.3 CALIBRATING TO DISPLAY OXYGEN PARTIAL PRESSURE IN mm Hg**

---

For some liquid measurements, and for most gas phase measurements, it may be desirable to read the meter in oxygen partial pressure units such as millimeters of mercury (mm Hg). To calibrate the % air saturation mode to mm Hg units (0 to 200.00 mm Hg range), proceed as follows:

1. Remove the back cover and move the membrane selector switch to the **2 MIL** position, **BUT DO NOT CHANGE THE MEMBRANE**. The standard 1 MIL membrane is used in this measurement. Replace the back cover.

2. Place the probe in a constant room temperature air environment. Determine the room's oxygen partial pressure (Dry air at 760 mm Hg total pressure has an O<sub>2</sub> partial pressure of 20.94% of the total pressure, or 159.1 mm Hg.)<sup>\*</sup>  
Example: 760 mm Hg x 0.2094 = 159.1 mm Hg.
3. Adjust the **02 CALIB** control until the meter reading (read as mm Hg instead of the marked %) matches the oxygen partial pressure of the room air. Once calibrated, oxygen partial pressure may be measured in any gas environment between 0 and 45°C, and at any pressure from atmospheric to 100 psi (7 atmospheres). Vacuum conditions should be avoided because the probe's internal electrolyte can outgas and cause membrane distortion.

**CAUTION:** When making gas phase measurements, the operator must avoid rapid temperature fluctuations. The thermal sensor located in the stainless steel tube on the oxygen sensor operated to compensate automatically for changes in membrane permeability caused by variations in temperature. However, the thermal response of this sensor is much slower in air or gas than the membrane's response to a change in gas temperature. Therefore, rapid temperature fluctuations are liable to prevent the automatic compensation that is necessary for accurate measurement. This is not a problem in liquid measurements.

## 4.5 RECORDER OUTPUT

---

Output at full scale is 1VDC. (0.0005V = 1 digit). Use a recorder with input impedance of at least 50K OHM, and operate it with the terminals ungrounded.

A recorder output plug is provided. Cable for connecting the recorder must be supplied by the user.

---

<sup>\*</sup> L. Machts, "Atmospheric Oxygen in 1967 to 1970," Science, Volume 168, June 26, 1970, pp. 1582-1594.

## SECTION 5 CARE AND MAINTENANCE

---

### 5.1 THE METER CASE

---

Each opening of the case is gasketed to resist entry of water. When the case has been opened for any reason, be sure that the main case gasket is accurately seated between both halves of the case, and that the four case screws are drawn down securely (but not so tight as to deform the rubber feet).

### 5.2 PROBE PERFORMANCE CHECK

---

Every month when the probe is in daily use (less frequently otherwise), or whenever the probe response is slow or calibration is unstable, check the probe performance.

1. **Speed of Response**
  - Prepare and calibrate the probe.
  - With the probe in air, switch to the percent air saturation mode.
  - Immerse the probe in a 25°C O<sub>2</sub>-depleted sample. (An O<sub>2</sub> depleted sample may be prepared by adding approximately one gram of sodium sulfite to a half liter of water.)
  - A properly functioning probe will respond down scale to 10% air saturation in 20 seconds or less.
2. **Background Current**
  - After performing the Speed of Response steps, leave the probe in the depleted sample for approximately five minutes. The reading should fall below 1% air saturation.
3. **Calibration Stability**
  - Carefully calibrate the probe in moist air inside the calibration bottle with the instrument set in the % air saturation mode.
  - Allow the instrument to operate for one hour.
  - A properly functioning probe will hold calibration within  $\pm 1\%$  for one hour, after the first hour of operation.

**If the probe fails any of the three tests above, check for:**

- Damaged or wrinkled membrane. Change the membrane and retest.
- Fouled or silver coated cathode. Clean as instructed in Section 3, Preparing the Probe.
- Fouled anode. Soak for 24 hours in 3% ammonia (NH<sub>3</sub>); rinse thoroughly with distilled water and retest.

If these steps do not restore the probe to specification performance, return the probe to the factory for service. See Section 8, for Warranty and Service Information.

### 5.3 PROBE PRECAUTIONS

---

Membrane life depends on usage. It is recommended that membrane caps not be re-used.

1. To keep the electrolyte from drying out, store the probe in a moist environment, such as the calibration chamber with the wet sponge inside.

2. Erratic readings are a result of loose, wrinkled, damaged, or fouled membranes, or from large (more than 1/4 of the circumference of the probe) bubbles in the electrolyte reservoir. If erratic readings or evidence of membrane damage occurs, you should replace the membrane cap and the probe solution.
3. If the membrane is coated with oxygen consuming (e.g. bacteria) or oxygen evolving organisms (e.g. algae), erroneous readings may occur.
4. Chlorine, sulfur dioxide, nitric oxide, and nitrous oxide can affect readings by behaving like oxygen at the probe. If you suspect erroneous readings, it may be necessary to determine if these gases are the cause.
5. Avoid any environment that contains substances that may attack the probe materials. Some of these substances are concentrated acids, caustics, and strong solvents. The probe materials that come in contact with the sample include FEP Teflon, stainless steel, epoxy, polyetherimide and the polyurethane cable covering.
6. Do not allow the probe to strike hard objects. The membrane or sensor inside may be damaged.

### 5.3.1 5905 AND 5239 PROBE CARE

---

#### ELECTRODE CLEANING

---

The 5905 and 5239 probes should be cleaned only when erratic readings occur or after about every 500 hours of use (two months). Each cleaning removes material, so excessive cleaning should be avoided.

#### GOLD CATHODE

---

For correct probe operation, the gold cathode must be textured properly. It can become tarnished or plated with silver after extended use. The gold cathode can be cleaned by using the adhesive backed sanding disc provided in the 5906 Membrane Kit. Stick the disc to a small flat object, like a bottle cap, then sand the gold with a twisting motion about 3 times or until all silver deposits are removed and the gold appears to have a matte finish. If the cathode remains tarnished, return the probe for service.

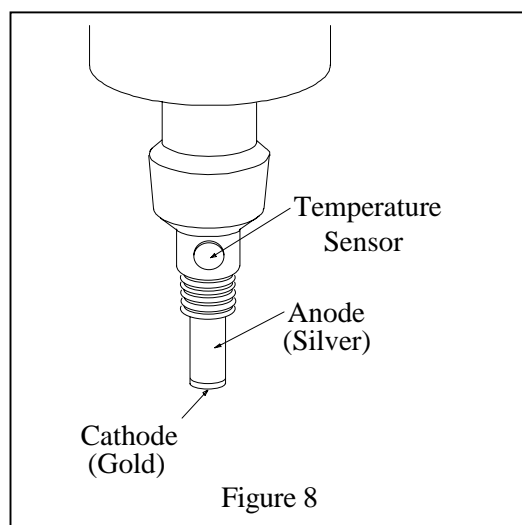


Figure 8

## **SILVER ANODE**

---

It is normal for a dark layer of silver chloride to cover the silver anode. After prolonged use it may become necessary to clean the anode. Soak the probe in a 14% ammonium hydroxide solution for 2 to 3 minutes or overnight in a 3% ammonium hydroxide solution. Rinse with deionized water, recharge with electrolyte, and install a new membrane.

### **5.3.2 5700-SERIES PROBE CARE**

---

## **GOLD CATHODE**

---

Inspect the gold cathode when changing the membrane; it should be bright and untarnished. If it is untarnished, which can result from contact with certain gases, or plated with silver, which can result from extended use with a loose or wrinkled membrane, clean it with a YSI 5680 Probe Reconditioning Kit, or return it to an authorized YSI Repair Center. Never use chemicals or any abrasive other than that supplied with the Reconditioning Kit.

## **SILVER ANODE**

---

If the silver anode becomes contaminated, successful calibration can be prevented. Soak the probe overnight in a 3% ammonia solution; rinse with deionized water, and follow the steps to install a new membrane. If it is not possible to calibrate, return the probe to an authorized YSI Repair Center.

## **5.4 PROBE STORAGE**

---

For long term storage (4 weeks), remove the membrane, thoroughly rinse the sensor with deionized or distilled water and install a new membrane. Store the sensor in a humid environment such as the calibration chamber with the wet sponge inside. Do NOT store the probe dry.

### **5.4.1 5905 AND 5239 PROBE STORAGE**

---

When the probe is not in use, store the probe in a BOD bottle containing at least 1 inch of water. For long-term storage, remove the membrane cap, rinse the probe tip with deionized water, and install a dry membrane cap (without electrolyte solution).

### **5.4.2 5700 SERIES PROBE STORAGE**

---

Store the field probes in the plastic bottle provided. To keep the electrolyte from drying out, place a small piece of moist towel or sponge in the bottle and insert the probe in one end. Store the BOD probe in a BOD bottle containing at least an inch of water. Do not immerse the probe in water.

# SECTION 6 DISCUSSION OF MEASUREMENT ERRORS

---

There are three basic types of dissolved oxygen errors. Type 1 errors are related to limitations of instrument design and tolerances of instrument components. These are primarily the meter linearity and the resistor tolerances. Type 2 errors are due to basic probe accuracy tolerances, mainly background signal, probe linearity, and variations in membrane temperature coefficient. Type 3 errors are related to the operator's ability to determine the conditions at the time of calibration. If calibration is performed against more accurately known conditions, type 3 errors are appropriately reduced.

## Type 1 Errors

- A. Meter linearity error:  $\pm 0.5\%$  of full scales reading, or  $\pm 0.04$  mg/l at  $25^\circ\text{C}$  whichever is greater.
- B. Component and circuitry error:  $\pm 0.04$  mg/l

## Type 2 Errors

- A. DO errors caused by temperature compensation for measurements at  $\pm 10^\circ\text{C}$  from calibration temperature:  $\pm 1\%$  of  $25^\circ\text{C}$  ( $\pm 0.08$  mg/l)
- B. DO errors caused by temperature measurement errors: A maximum  $\pm 0.2^\circ\text{C}$  temperature error is equal to  $\pm 0.5\%$  ( $0.04$ mg/L at  $25^\circ\text{C}$ ).

## Type 3 Errors

- A. Altitude: The maximum DO error caused by calibrating to altitude in increments of 100 feet:  $\pm 0.18\%$  ( $< 0.015$  mg/l at  $25^\circ\text{C}$ )
- B. Humidity: Errors occur if calibration is performed at less than 100% humidity. The worst possible case would be calibration at 0% humidity. The error varies with the calibration temperature as follows:

Temperature	Calibration Error at 0% humidity
$0^\circ\text{C}$	0.09 mg/l
$10^\circ\text{C}$	0.14 mg/l
$20^\circ\text{C}$	0.21 mg/l
$30^\circ\text{C}$	0.33 mg/l
$40^\circ\text{C}$	0.50 mg/l

## Approximating the Error

It is unlikely that the actual error in any measurement will be the maximum possible error. A better error approximation is obtained using a root mean squared (r.m.s.) calculation:

$$\text{r.m.s. error} = \pm [1a^2 + 1b^2 + 2a^2 + 2b^2 + 3a^2 + 3b^2]^{1/2} \text{ mg/l}$$

### NOTE: This calculation is for a near extreme set of conditions.

If the probe is calibrated in water-saturated air, then type 3B errors (humidity), the largest error of all types, is virtually eliminated and the maximum possible error is in the order of 0.1 mg/L for the case of calibrating around  $25^\circ\text{C}$ .

## SECTION 7 TROUBLESHOOTING

Symptom	Possible Cause	Action	Ref
Instrument will not turn on	Low battery voltage	Replace batteries	2.3
	Batteries installed wrong	Check battery polarity.	2.3
	Meter requires service	Return system for service	8
Instrument will not calibrate	Membrane is fouled or damaged	Replace membrane	3.2
	Probe anode is fouled or dark	Clean anode	5
	Probe cathode is fouled	Resurface cathode	5
	System requires service	Return system for service	8
Instrument "locks up"	Instrument has recorded a shock	Remove battery lid, wait 15 seconds for reset, and replace lid.	2
	Batteries are low or damaged	Remove battery lid, wait 15 seconds for reset, and replace lid.	2
	System requires service	Return system for service	8
Dissolved Oxygen readings are inaccurate	Cal value is incorrect	Recalibrate w/correct value	4.3
	Probe not in 100% water saturated air during Cal procedure	Moisten sponge & place in Cal chamber w/ probe & Recal	4.3
	Membrane fouled or damaged	Replace membrane	3.2
	Probe anode is fouled or dark	Clean anode	5
	Probe cathode is fouled	Resurface cathode	5
	System requires service	Return system for service	8
LCD displays "LO BAT"	Batteries are low or damaged	Replace batteries	2.3
Does not return to calibration value		Allow sufficient time for temperature and oxygen stabilization	4.3
		Check for water droplets on membrane	3.2
		Change membrane	3.2
		Clean probe (see instructions under Electrode Cleaning)	5
Unstable readings		Allow sufficient time for temperature and oxygen stabilization	4.4
		Allow 60 sec for reading to stabilize	
		Change membrane	3.2
		Clean probe (see instructions under Electrode Cleaning)	5

<b>Symptom</b>	<b>Possible Cause</b>	<b>Action</b>	<b>Ref</b>
Motor not working on the 5905		Check power supply	
		Manually turn the stir paddle to help start the motor	3.1.2
		Replace motor	8
Loud motor on the 5905		Check if stir paddle is pushed all the way in	3.1.2
		Replace motor	8
	Bent stir paddle	Replace stir paddle	8
Membrane cap is tight on the 5905		Use pliers to loosen the cap (turn counter clockwise while facing sensor tip)	3.2

## **SECTION 8 WARRANTY AND SERVICE INFORMATION**

---

YSI 58 Dissolved Oxygen Meters are warranted for two years from date of purchase by the end user against defects in materials and workmanship. YSI 58 probes and cables are warranted for one year from date of purchase by the end user against defects in material and workmanship. Within the warranty period, YSI will repair or replace, at its sole discretion, free of charge, any product that YSI determines to be covered by this warranty.

To exercise this warranty, write or call your local YSI representative, or contact YSI Customer Service in Yellow Springs, Ohio. Send the product and proof of purchase, transportation prepaid, to the Authorized Service Center selected by YSI. Repair or replacement will be made and the product returned transportation prepaid. Repaired or replaced products are warranted for the balance of the original warranty period or at least 90 days from date of repair or replacement.

### **LIMITATION OF WARRANTY**

---

This Warranty does not apply to any YSI product damage or failure caused by (i) failure to install, operate or use the product in accordance with YSI's written instructions, (ii) abuse or misuse of the product, (iii) failure to maintain the product in accordance with YSI's written instructions or standard industry procedure, (iv) any improper repairs to the product, (v) use by you of defective or improper components or parts in servicing or repairing the product, or (vi) modification of the product in any way not expressly authorized by YSI.

THIS WARRANTY IS IN LIEU OF ALL OTHER WARRANTIES, EXPRESSED OR IMPLIED, INCLUDING ANY WARRANTY OF MERCHANTABILITY OR FITNESS FOR A PARTICULAR PURPOSE. YSI's LIABILITY UNDER THIS WARRANTY IS LIMITED TO REPAIR OR REPLACEMENT OF THE PRODUCT, AND THIS SHALL BE YOUR SOLE AND EXCLUSIVE REMEDY FOR ANY DEFECTIVE PRODUCT COVERED BY THIS WARRANTY. IN NO EVENT SHALL YSI BE LIABLE FOR ANY SPECIAL, INDIRECT, INCIDENTAL OR CONSEQUENTIAL DAMAGES RESULTING FROM ANY DEFECTIVE PRODUCT COVERED BY THIS WARRANTY.

## AUTHORIZED U.S. SERVICE CENTERS

---

### North and East Region

YSI Incorporated • Repair Center • 1725 Brannum Lane • Yellow Springs, Ohio • 45387 • Phone: (800) 765-4974 • (937) 767-7241 • E-Mail: info@ysi.com

### South Region

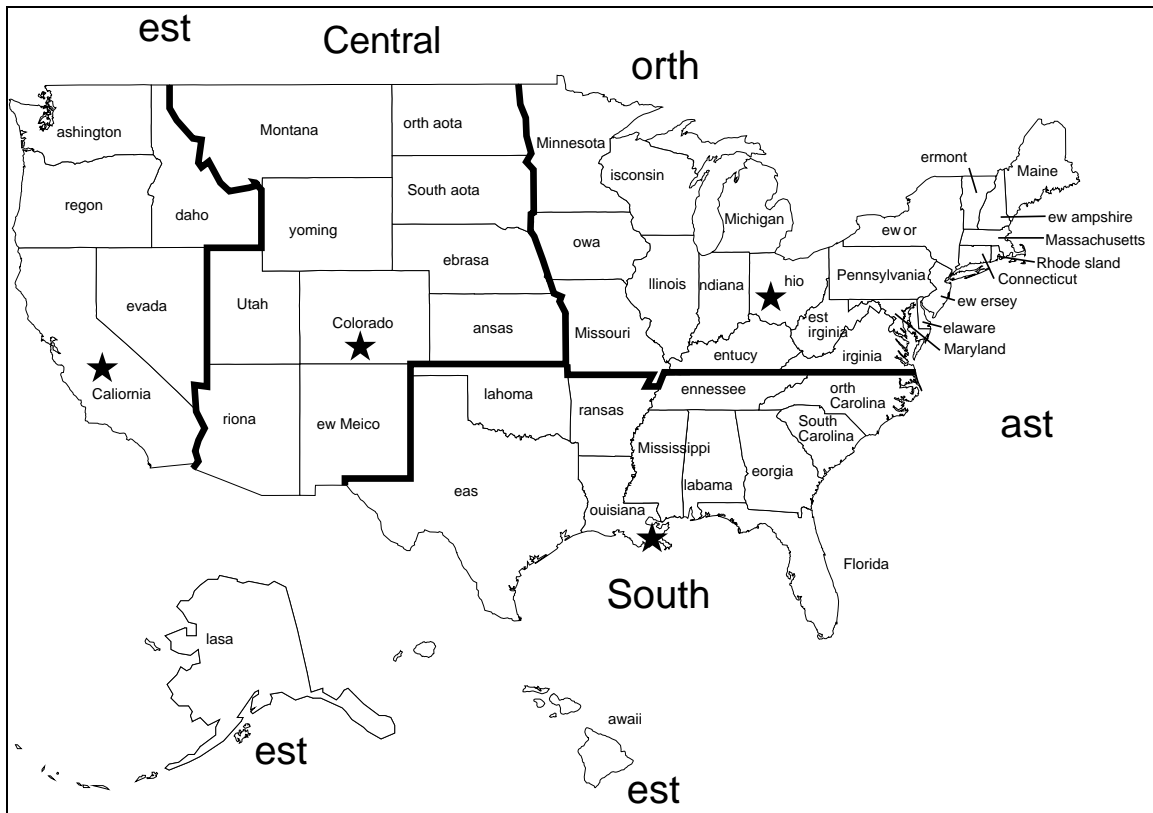
C.C. Lynch & Associates • 212 E. 2nd Street • Suite 203 • Pass Christian, Mississippi • 39571 • Phone: (800) 333-2252 • (228) 452-4612 • Fax: (228) 452-2563

### West Region

EQUIPCO Sales and Service • 1110 Burnett Avenue, Suite D • Concord, CA • 94520 • Phone: (800)550-5875 • Fax: (510)674-8655

### Central Region

HydroTech Services, LLC • 4910 Iris Street Wheat Ridge, CO • 80033 • Phone: (877)467-0800 • Fax: (303) 467 0742 • E-Mail: 100735.423@compuserve.com



## **INTERNATIONAL SERVICE CENTERS**

---

### **International Service** (except Europe and Japan)

YSI Incorporated • Repair Center • 1725 Brannum Lane • Yellow Springs, Ohio • 45387 • Phone: (937) 767-7241 • E-Mail: info@ysi.com

### **Europe**

European Service Center • Lynchford House • Lynchford Lane • Farnborough • Hampshire • GU146LT • Phone: (44-1252) 514711 • Fax: (44-1252) 511855 • Tlx: 858210

### **Japan**

YSI Limited • Sakura – Building 6-5-6-13 • Shinjuku, Shinjuku-ku, Tokyo • 160 • Phone: (81-3) 5360-3561 • Fax: (81-3) 5360-3565

## **SPECIALTY SERVICE CENTERS**

---

### **Aquaculture**

Aquatic Eco Systems, Inc. • 1767 Benbow Court • Apopka, Florida • Phone: (407) 886-3939 • Fax: (407) 886-6787

Aquacenter • 166 Seven Oaks Road • Leland, Mississippi • 38756 • Phone: (601) 378-2861 • Fax: (601) 378-2862

### **Wastewater**

Q.C. Services • P.O. Box 68 • Harrison, Maine • 04040 • Phone: (207) 583-2980

Q.C. Services • P.O. Box 14831 • Portland, Oregon • 97293 • Phone: (503) 236-2712

North Central Labs • 400 Lyons Road • Birnamwood, Wisconsin • Phone: (800) 648-7836 • Fax: (715) 449-2454

## CLEANING INSTRUCTIONS

---

**NOTE: Before they can be serviced, equipment exposed to biological, radioactive, or toxic materials must be cleaned and disinfected.** Biological contamination is presumed for any instrument, probe, or other device that has been used with body fluids or tissues, or with waste water. Radioactive contamination is presumed for any instrument, probe or other device that has been used near any radioactive source.

If an instrument, probe, or other part is returned or presented for service without a Cleaning Certificate, and if in our opinion it represents a potential biological or radioactive hazard, our service personnel reserve the right to withhold service until appropriate cleaning, decontamination, and certification has been completed. We will contact the sender for instructions as to the disposition of the equipment. Disposition costs will be the responsibility of the sender.

When service is required, either at the user's facility or at YSI, the following steps must be taken to insure the safety of our service personnel.

1. In a manner appropriate to each device, decontaminate all exposed surfaces, including any containers. 70% isopropyl alcohol or a solution of 1/4 cup bleach to 1 gallon tap water is suitable for most disinfecting. Instruments used with waste water may be disinfected with 0.5% Lysol if this is more convenient to the user.
2. The user shall take normal precautions to prevent radioactive contamination and must use appropriate decontamination procedures should exposure occur.
3. If exposure has occurred, the customer must certify that decontamination has been accomplished and that no radioactivity is detectable by survey equipment.
4. Any product being returned to the YSI Repair Center, should be packed securely to prevent damage.
5. Cleaning must be completed and certified on any product before returning it to YSI.

## PACKING INSTRUCTIONS

---

1. Clean and decontaminate items to insure the safety of the handler.
2. Complete and include the Cleaning Certificate.
3. Place the product in a plastic bag to keep out dirt and packing material.
4. Use a large carton, preferably the original, and surround the product completely with packing material.
5. Insure for the replacement value of the product.

**Cleaning Certificate**

Organization \_\_\_\_\_

Department \_\_\_\_\_

Address \_\_\_\_\_

City \_\_\_\_\_ State \_\_\_\_\_ Zip \_\_\_\_\_

Country \_\_\_\_\_

Model No. of Device \_\_\_\_\_ Lot Number \_\_\_\_\_

Contaminant (if known) \_\_\_\_\_

Cleaning Agent(s) used \_\_\_\_\_

Radioactive Decontamination Certified?

(Answer only if there has been radioactive exposure)

\_\_\_ Yes \_\_\_ No

Cleaning Certified by \_\_\_\_\_

Name

Date

# APPENDIX A GENERAL SPECIFICATIONS

---

## YSI 58 SPECIFICATIONS

---

**Power:** 4 D-size Alkaline Batteries (included)

Approximately 1000 hours operation from each new set of batteries.

Low battery indicator signal (LOBAT) appears automatically when approximately 50 hours of battery life remain.

**Water Resistance:** With RECORDER OUT, BATT ELIM and STIRRER receptacles capped, every case opening is splash resistant.

**Operating Environment**

Medium: fresh, sea, or polluted water and most other liquid solutions.

Temperature: 0 to +45 °C

**Storage Temperature:** 0 to +45 °C

**System Performance Specifications:**

Measurement	Range	Resolution	Accuracy
Temperature	-5 to +45 °C	0.1° C	± 0.3 °C, plus probe interchangeability
Dissolved Oxygen	0 to 200 % Air Sat.	0.1%	±0.3% Air Saturation
	0 to 20.00 mg/L	.01 mg/L	0.03 mg/L

**Temperature Compensation:**

The mg/L modes are automatically temperature compensated to an accuracy of ± 1% of the dissolved oxygen reading between 5 and 45°C; and to an accuracy of ±2% between 0 and 5. °C. See Temperature Sensitivity in probe specifications.

**Salinity Compensation:**

Salinity Range: 0 to 40 parts per thousand

Accuracy: ± 0.3% of reading ± 1 digit

**Mode to Mode Accuracy** (mg/L to percent air saturation)

± 0.5% of reading, ± 2 least significant digits (in the 0.01 mg/L mode)

**Recorder Output:**

Voltage: 0 to 1 volt, full scale

Accuracy: + 0.4 % of full scale, + 1 least significant digit (in the 0.01 mg/L mode)

Minimum Load Impedance: 50 K OHM

## PROBE SPECIFICATIONS (YSI 5739, 5905, 5239, 5718 AND 5750 PROBES)

---

**Cathode:** Gold

**Anode:** Silver

**Membrane:** .001" FEP Teflon  
.0005" FEP Teflon available, YSI 5776

**Electrolyte for the 5739, 5718, and 5750 probes:** KCL with Kodak Photo-Flo

**Electrolyte for the 5905, 5239 probes:** KCl with  $\text{Na}_2\text{SO}_4$

**Dissolved Oxygen Accuracy:**  $\pm 0.1$  mg/L or  $\pm 1\%$  of reading, whichever is greater

**Operating Temperature Range:**  $15^\circ$  to  $35^\circ\text{C}$

**Temperature Sensitivity:** When measuring oxygen, the probe output current increases approximately 3.5% per  $1^\circ\text{C}$  of increase in temperature. The circuitry automatically compensates for this effect in a typical probe. However, the exact temperature sensitivity of an individual probe may vary slightly according to its condition. Therefore, a probe should be calibrated at a temperature close to the measurement temperature in order to minimize the possible effect of such variation.

**Temperature Sensor Accuracy:**  $+ 0.2^\circ\text{C}$

**Pressure Compensation:** Effective 0.5% of reading with pressures to 100 psi (230 feet of seawater)

**Polarizing Voltage:** 0.8 volts nominal

**Probe Current:** Air at  $30^\circ\text{C}$ , 19 microamps nominal  
Nitrogen at  $30^\circ\text{C}$ , 15 microamps or less

**Probe Response Time:** Typical response for temperature and dissolved oxygen readings is 90% in 10 seconds at a low constant temperature of  $30^\circ\text{C}$  with the 5775 membrane. DO response and low temperature and low DO is typically 90% in 30 seconds. YSI 5776 High Sensitivity membranes may be used to improve response at low temperature and DO concentrations.

## APPENDIX B

## REQUIRED NOTICE

---

The Federal Communications Commission defines this product as a computing device and requires the following notice:

This equipment generates and uses radio frequency energy and if not installed and used properly, may cause interference to radio and television reception. There is no guarantee that interference will not occur in a particular installation. If this equipment does cause interference to radio or television reception, which can be determined by turning the equipment off and on, the user is encouraged to try to correct the interference by one or more of the following measures:

- re-orient the receiving antenna
- relocate the computer with respect to the receiver
- move the computer away from the receiver
- plug the computer into a different outlet so that the computer and receiver are on different branch circuits.

If necessary, the user should consult the dealer or an experienced radio/television technician for additional suggestions. The user may find the following booklet, prepared by the Federal Communications Commission, helpful: "How to Identify and Resolve Radio-TV Interference Problems." This booklet is available from the U.S. Government Printing Office, Washington, DC 20402, Stock No. 0004-000-00345-4.

# APPENDIX C ACCESSORIES REPLACEMENT PARTS

# AND

The following parts and accessories are available from YSI or any Franchise Dealer authorized by YSI.

YSI Order Number	Description
5905	Self-Stirring BOD Bottle Probe
5750	Non-Stirring BOD Bottle Probe
5740 – 10 5740 – 25 5740 – 50 5740 – 100 5740 – 150 5740 – 200	Detachable leads for use with the 5739 probe only. Comes in 10, 25, 50, 100, 150, 200 feet lengths.
5739, 5718, 5239	Oxygen/Temperature Probe for Field Use
5401	Battery Eliminator (115 VAC)
5402	Battery Eliminator (230 VAC)
5795A	Submersible Stirrer. With power and probe cables. Requires 5739 probe.
5050	Carrying Case
5906	Membrane Kit
5775	Membrane and KCl Kit. Standard. Includes two 15-membrane packets (.001” thick standard membranes) and a 30 ml bottle of KCl electrolyte with Kodak Photo-Flo.
5776	Membrane and KCl kit, High Sensitivity. Includes tow 15-membrane packets (.0005” thick high sensitivity membranes) and a 30 ml bottle of KCl electrolyte with Kodak Photo-Flo.
5945	O-Ring Pack
5986	Diaphragm Kit. For use with the 5739 probe only.
5680	Probe Reconditioning Kit

## APPENDIX D UNIT CONVERSION CHART

---

To Convert From	To	Equation
Feet	Meters	Multiply by 0.3048
Meters	Feet	Multiply by 3.2808399
Degrees Celsius	Degrees Fahrenheit	$(9/5 \text{ } ^\circ\text{C})+32$
Degrees Fahrenheit	Degrees Celsius	$5/9 \text{ (}^\circ\text{F}-32)$
Milligrams per liter (mg/l)	Parts per million (ppm)	Multiply by 1

# APPENDIX E TABLE

# OXYGEN

# SOLUBILITY

Solubility of Oxygen in mg/l in Water Exposed to Water-Saturated Air at 760 mm Hg Pressure.

Salinity = Measure of quantity of dissolved salts in water.

Chlorinity = Measure of chloride content, by mass, of water.

$$S(^{0}/_{00}) = 1.80655 \times \text{Chlorinity } (^{0}/_{00})$$

Temp °C	Chlorinity:0 Salinity:0	5.0 ppt 9.0 ppt	10.0 ppt 18.1 ppt	15.0 ppt 27.1 ppt	20.0 ppt 36.1 ppt	25.0 ppt 45.2 ppt
0.0	14.62	13.73	12.89	12.10	11.36	10.66
1.0	14.22	13.36	12.55	11.78	11.07	10.39
2.0	13.83	13.00	12.22	11.48	10.79	10.14
3.0	13.46	12.66	11.91	11.20	10.53	9.90
4.0	13.11	12.34	11.61	10.92	10.27	9.66
5.0	12.77	12.02	11.32	10.66	10.03	9.44
6.0	12.45	11.73	11.05	10.40	9.80	9.23
7.0	12.14	11.44	10.78	10.16	9.58	9.02
8.0	11.84	11.17	10.53	9.93	9.36	8.83
9.0	11.56	10.91	10.29	9.71	9.16	8.64
10.0	11.29	10.66	10.06	9.49	8.96	8.45
11.0	11.03	10.42	9.84	9.29	8.77	8.28
12.0	10.78	10.18	9.62	9.09	8.59	8.11
13.0	10.54	9.96	9.42	8.90	8.41	7.95
14.0	10.31	9.75	9.22	8.72	8.24	7.79
15.0	10.08	9.54	9.03	8.54	8.08	7.64
16.0	9.87	9.34	8.84	8.37	7.92	7.50
17.0	9.67	9.15	8.67	8.21	7.77	7.36
18.0	9.47	8.97	8.50	8.05	7.62	7.22
19.0	9.28	8.79	8.33	7.90	7.48	7.09
20.0	9.09	8.62	8.17	7.75	7.35	6.96
21.0	8.92	8.46	8.02	7.61	7.21	6.84
22.0	8.74	8.30	7.87	7.47	7.09	6.72
23.0	8.58	8.14	7.73	7.34	6.96	6.61

<b>Temp °C</b>	<b>Chlorinity:0 Salinity:0</b>	<b>5.0 ppt 9.0 ppt</b>	<b>10.0 ppt 18.1 ppt</b>	<b>15.0 ppt 27.1 ppt</b>	<b>20.0 ppt 36.1 ppt</b>	<b>25.0 ppt 45.2 ppt</b>
24.0	8.42	7.99	7.59	7.21	6.84	6.50
25.0	8.26	7.85	7.46	7.08	6.72	6.39
26.0	8.11	7.71	7.33	6.96	6.62	6.28
27.0	7.97	7.58	7.20	6.85	6.51	6.18
28.0	7.83	7.44	7.08	6.73	6.40	6.09
29.0	7.69	7.32	6.96	6.62	6.30	5.99
30.0	7.56	7.19	6.85	6.51	6.20	5.90
31.0	7.43	7.07	6.73	6.41	6.10	5.81
32.0	7.31	6.96	6.62	6.31	6.01	5.72
33.0	7.18	6.84	6.52	6.21	5.91	5.63
34.0	7.07	6.73	6.42	6.11	5.82	5.55
35.0	6.95	6.62	6.31	6.02	5.73	5.46
36.0	6.84	6.52	6.22	5.93	5.65	5.38
37.0	6.73	6.42	6.12	5.84	5.56	5.31
38.0	6.62	6.32	6.03	5.75	5.48	5.23
39.0	6.52	6.22	5.98	5.66	5.40	5.15
40.0	6.41	6.12	5.84	5.58	5.32	5.08
41.0	6.31	6.03	5.75	5.49	5.24	5.01
42.0	6.21	5.93	5.67	5.41	5.17	4.93
43.0	6.12	5.84	5.58	5.33	5.09	4.86
44.0	6.02	5.75	5.50	5.25	5.02	4.79
45.0	5.93	5.67	5.41	5.17	4.94	4.72

# APPENDIX F TABLE

# CALIBRATION

# VALUES

Calibration values for various atmospheric pressures and altitudes.

Note: This table is for your information only. It is not required for calibration.

Pressure Inches of Hg	Pressure mm Hg	Pressure kPA	Altitude in feet	Altitude in meters	Calibration Value in %
30.23	768	102.3	-276	-84	101
29.92	760	101.3	0	0	100
29.61	752	100.3	278	85	99
29.33	745	99.3	558	170	98
29.02	737	98.3	841	256	97
28.74	730	97.3	1126	343	96
28.43	722	96.3	1413	431	95
28.11	714	95.2	1703	519	94
27.83	707	94.2	1995	608	93
27.52	699	93.2	2290	698	92
27.24	692	92.2	2587	789	91
26.93	684	91.2	2887	880	90
26.61	676	90.2	3190	972	89
26.34	669	89.2	3496	1066	88
26.02	661	88.2	3804	1160	87
25.75	654	87.1	4115	1254	86
25.43	646	86.1	4430	1350	85
25.12	638	85.1	4747	1447	84
24.84	631	84.1	5067	1544	83
24.53	623	83.1	5391	1643	82
24.25	616	82.1	5717	1743	81
23.94	608	81.1	6047	1843	80
23.62	600	80.0	6381	1945	79
23.35	593	79.0	6717	2047	78
23.03	585	78.0	7058	2151	77
22.76	578	77.0	7401	2256	76
22.44	570	76.0	7749	2362	75
22.13	562	75.0	8100	2469	74
21.85	555	74.0	8455	2577	73
21.54	547	73.0	8815	2687	72
21.26	540	71.9	9178	2797	71
20.94	532	70.9	9545	2909	70
20.63	524	69.9	9917	3023	69
20.35	517	68.9	10293	3137	68



*YSI incorporated*

1700/1725 Brannum Lane  
Yellow Springs, Ohio 45387 USA  
(800) 765-4974 (937) 767-7241  
FAX: (937) 767-9320  
Website: <http://www.ySI.com>  
E-MAIL: [info@ysi.com](mailto:info@ysi.com)

ITEM # 069387  
DRW # A58020K  
January 1999